

NABI-PGH

2023

CORPORATE PROFILE



🌐 249-251 Grants Road, Rousillac,
Trinidad and Tobago, W.I
✉ nabipgh@gmail.com

TABLE OF CONTENTS

WHO WE ARE	2
OUR MOTIVE	3
OUR MISSION AND VISION.....	4
OUR AREAS OF OPERATIONS	5
1.0 Trading and Supply	5
2.0 Oil and Petroleum Products.....	6
Our Products	7
3.0 Shipping and Freight	9
4.0 Petroleum Services.....	10
A. Our Experience in Land Oilfield Operations	12
5.0 Agriculture.....	17
AREAS OF OPERATIONS	20
WHERE ARE WE IN 2023?	21
OUR PLANS FOR 2023-2024.....	22
OILFIELD EQUIPMENT OWNED AND OPERATED	23
AREAS OF EXPERTISE.....	40
CORPORATE LEADERSHIP	41
KEY PERSONNEL	44
CORPORATE PHILOSOPHY	46

WHO WE ARE

NABI PGH/ CORPORATE SUMMARY

NABI-PGH specializes in the business of petroleum operations. We are an oil and petrochemical company engaged in petroleum operations including, but not limited to, the exploration, development and production of hydrocarbons, as well as the trading of a wide variety of petroleum products.

Our key focus points in the petroleum sector are to uphold, innovate and support the best operational practices and safety standards in the industry. The decades of experience that our team members possess in the petroleum sector minimize our challenges and enables us to deliver technical expertise and quality solutions and services to companies in the Oil and Gas industry within the Caribbean and South American region.



Our primary objective is to provide value in the Oil and Gas industry through safe and efficient execution and stewardship of our portfolio of diverse projects. The collective expertise of our workforce is orchestrated to provide cost-effective intelligent solutions.

We believe in the power of energy to transform lives, and using this as our foundation, we aim for progressive development, we build our efforts around delivering the best products achievable while maintaining sustainability, and efficiency in our processes.

Exceptional reliability, industry-specific expertise and safety are our core values that drive our relentless focus on being the preeminent service provider in the South American and Caribbean region, oil and gas services sector.

OUR MOTIVE



NABI-PGH aims to provide a one stop shop for operations requiring Oil, Gas & Water Exploration, Drilling, Production, Exploitation and Field Management Services. We aim to offer an integrated management and operational solution to clients and interest holders of reserves, that require exploration, development and commercialization services. We create collaborations and partnerships with complementary service providers which enable the development of solutions that will have the long-term common objective of increased production, efficiency and safety in the Oil and Gas Sector, allowing exploitation of reserves to be economical as to fluctuating market prices. Depending on the scope of works, and size of the project we provide different equipment, products and personnel as well as partnership models to meet the project requirements. We promise to provide the most optimum, economical and customized solutions which will be designed and completed in accordance with even the most demanding scope of works.

OUR MISSION AND VISION

Our Mission is to provide rich quality, reliable solutions, with highly efficient equipment, personnel and inputs, at the core of our operations.

Our Vision is to achieve 100% customer satisfaction by delivering premium equipment, products and services at an affordable cost. Our forward vision is to identify as an entity in the Oil, Gas industry that can provide coherent solutions in holistic petroleum operations with existing and new technology as per client's corporate requirements, with the capability of delivering first-rate services and unwavering demand and satisfaction from clients.

Our keys for development:

- Safe Work practices.
- Conversation Intelligence to understand client's needs, (to have understanding, agreement, collaboration and co-creativity).
- Efficiency and intelligence.
- Innovation.
- Transparency.
- Teamwork.

We believe in:

- Preserving and conserving our environment
- Keeping our employees and communities safe
- Motivating and Leading.
- Creating Value
- Contributing to a recyclable economy
- Sustainable development
- Giving 100% in all areas of operations

OUR AREAS OF OPERATIONS

1.0 Trading and Supply



Trading is an integral part of our business, and energy in many different physical forms is the resource we trade the most. More than simply a thread linking every aspect of what we do, trading is the conduit through which we receive and share vital market information; maintain the balance and flow of our liquidity; and forge lasting, rewarding relationships with customers all over the world.

We take pride in our ability to take on difficult, complex projects and deliver effective solutions quickly and transparently. Because our partnership model is based on collective responsibility, we are careful to assess risk exposure on the ground, in the local markets where we can see the real connection between cause and effect.

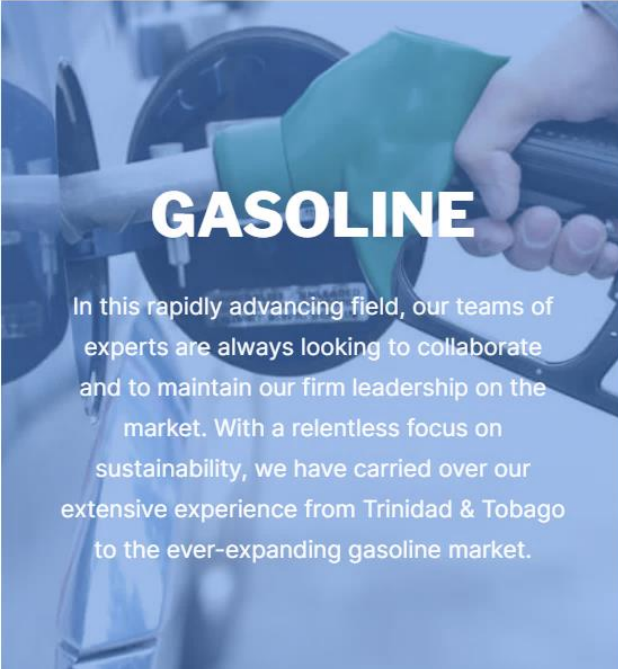
2.0 Oil and Petroleum Products



NABI-PGH is an oil and chemicals company. Our oils are managed by top-of-the-line industry experts and the most brilliant talent in the field. We are always on the lookout for innovative methods to refine and improve the quality of our products.

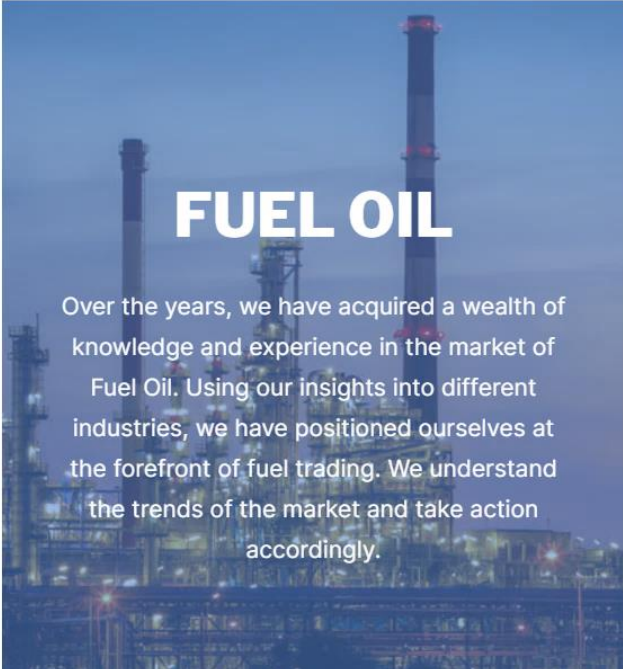
With limitless opportunities on the horizon, we are looking to improve on our position as one of the leading oil and petroleum product traders in the world.

Our Products



GASOLINE

In this rapidly advancing field, our teams of experts are always looking to collaborate and to maintain our firm leadership on the market. With a relentless focus on sustainability, we have carried over our extensive experience from Trinidad & Tobago to the ever-expanding gasoline market.



FUEL OIL

Over the years, we have acquired a wealth of knowledge and experience in the market of Fuel Oil. Using our insights into different industries, we have positioned ourselves at the forefront of fuel trading. We understand the trends of the market and take action accordingly.



CRUDE OIL

Our team of experts has a deep understanding of industry trends, keeping us always ahead of crude oil opportunities.



NAPHTHA

We are continually developing and expanding our Naphtha team. With long-term relationships and collaboration, we are rapidly expanding our scope and technologies in the Naphtha market, as well as incorporating our knowledge from all our different expertise to help streamline our value chain.



NATURAL GAS

We combine our expertise in Trinidad & Tobago with the opportunities bestowed upon us, to our customers' advantage. We have a deep understanding of natural gas. Our team of experts has in-depth technical knowledge and know just how to respond to the changes in the landscape of natural gas. Moreover, as with all our other services, we keep sustainability and long-term relationships a top priority in everything we do.



MIDDLE DISTILLATES

Supporting our Crude Oil we also produce and trade in middle distillates. With a wide range of products ranging from kerosene to jet fuel or diesel, we take our oil refinery seriously. We also use our superior logistical operations to transport and deliver our middle distillates on immaculate terms and time frames.



CONDENSATES

PGH is determined to offer the highest-grade condensates in the world. While focused in the ever-growing Caribbean region, we seek to fulfill the rising demand for condensates of all grades. Moreover, our research team are developing better and more efficient uses for all kinds of condensates. Coupled with our high levels of logistical expertise, we are poised to be the number one condensate trader in the region.



BIODIESEL

In alignment with our sustainability and environmentally-conscious culture, we are working hard to push biodiesel into use by more and more of our customers. PGH seeks to always work on sustainable projects with equally environmentally-friendly partners to bring biodiesel into more and more common use and trade.

3.0 Shipping and Freight



SHIPPING AND FREIGHT

NABI-PGH provides world class maritime logistics and shipping services for its commodity trading. As a trader, we strive to have infallible freight systems.

We push our vessels to meet all time, physical, and condition delivery requirements and carry out both wet and gas freight as well as dry freight. Additionally, our vessels come in a multitude of sizes to match all needs for commodities, and we handle our freight procedures on both ends from start to finish.

NATURAL GAS AND WET SHIPPING

We augment our gasoline, fuel and natural gas trading with incredibly flexible wet freight options. We also offer the same chartering to third parties and customers. PGH owns a large fleet with varying sizes of vessels to do all wet transportation jobs. We offer the same logistical excellence we pride ourselves in to customers and third parties to handle all wet and gas freight.

DRY SHIPPING

Besides our excellent logistical services in wet and gas freight, we also carry out dry shipping for metals and minerals, among other commodities.

PGH offers freight in vessels of varying sizes and capacities and also charters its fleet to third parties.

4.0 Petroleum Services

We want to establish ourselves as the best choice in the Oil and Gas Exploration and Development Industry, Consultancy, Turnkey Operations and as an Operating Partner by offering the full spectrum of services to our client as per project requirements.

We provide Oil, Gas Exploration, Drilling, Production, Well Servicing, Exploitation, Field Maintenance, Operations Management, Civil Engineering and Construction Services, offering an integrated management and operating solution to clients, license owners, lease operators and other interest holders of reserves, that require exploration, developing and commercialization.

We offer a complimentary catalogue of services and expertise within the Oil and Gas Industry in Trinidad and Tobago, the Caribbean and the South American region and specialize in the following lines of business:

- Cased hole well completion services
- Coiled tubing drilling services
- Conventional well directional drilling services
- Expandable pipe/screen well completion services
- Field development
- Integrated field rehabilitation services
- Intelligent well completion services
- Land oilfield rig services
- Liner running services
- Management and operation of all facilities, engineering, modification and maintenance services for site or platform
- Management and provision of all facilities engineering modification and maintenance services for a site or platform
- Multilateral directional well drilling services
- Multilateral well completion services
- Oilfield snubbing service
- Open hole completion services
- Rig well pulling crew services

- Rotary steerable directional drilling service
- Sand control well completion services
- Tubular running service
- Well abandonment services
- Well casing crew service
- Well casing milling services
- Well casing planning services
- Well completion engineering services
- Well completion fluids services
- Well completion planning services
- Well directional drilling services
- Well drilling control services
- Well drilling other general services
- Well drilling pipe threading
- Well drilling rig monitor services
- Well drilling supervision
- Well fabrication or construction services
- Well management / construction services
- Well plugging services
- Well redrilling or reworking services
- Well restoration and enhancement services
- Well site vacuum truck services
- Well swabbing services
- Well workover service

A. Our Experience in Land Oilfield Operations

NAME OF PROJECT	CLIENT	PERIOD	% COMPLETED
PROVISION OF WELL SERVICING AND WORKOVER PRODUCTION RIG SERVICES To provide labour and equipment for the execution of light and heavy rig operations	PETROTRIN	2018	100%
PROVISION OF WORKOVER PRODUCTION RIG SERVICES To supply labour and equipment for Well Servicing operations	TRINIDAD WIRELINE LIMITED	2018	100%
PROVISION OF WELL SERVICING AND WORKOVER PRODUCTION RIG SERVICES To provide consultation, labour, and equipment for well servicing and workover rig operations	MOONSIE OIL CO. LTD.	2018	100%
PROVISION OF WELL SERVICING AND WORKOVER PRODUCTION RIG SERVICES To provide labour and equipment to conduct Light and Heavy Rig Operations	FRAM EXPLORATION TRINIDAD LTD.	2018-2019	100%
PROVISION OF WELL SERVICING AND WORKOVER PRODUCTION RIG SERVICES To supply labour and equipment to execute Light and Heavy Rig Operations	WEST INDIAN ENERGY GROUP	2018-2019	100%
PROVISION OF WELL SERVICING AND WORKOVER PRODUCTION RIG SERVICES To supply labour and equipment for Light and Medium Rig Operations	TOUCHSTONE EXPLORATION TRINIDAD LTD.	2018-2019	100%
PROVISION OF WELL SERVICING AND WORKOVER PRODUCTION RIG SERVICES To supply labour, equipment and consultation for support of rig operations	COLUMBUS ENERGY GROUP PLC.	2019-2020	100%

PROVISION OF WELL SERVICING AND WORKOVER RIG SERVICES To supply labour and equipment for the provision of Light, Medium, Heavy and Pole Rig Operations	HERITAGE PETROLEUM COMPANY LTD.	JUN 20-FEB 2022	100%
PROVISION OF DRILLING AND EXPLORATION SERVICES- SAFFRON 1 Drilling and Exploration of Saffron 1 Oil Well	COLUMBUS ENERGY GROUP PLC.	2020	100%
PROVISION OF WORKOVER AND DRILLING RIG SERVICES To supply labour and equipment for the provision of Medium Rig and Drilling Rig Operations	TOUCHSTONE EXPLORATION TRINIDAD LTD./PRIMERA OIL & GAS LTD.	2021-PRESENT	ONGOING
INCREMENTAL PRODUCTION SERVICES AGREEMENT Operating and optimization of oil production in the Beach Marcelle, South Quarry and Morne Diablo fields (see pg. 16)	RANGE RESOURCES TRINIDAD LIMITED	SEPT 2021-PRESENT	ONGOING
PROVISION OF WELL SERVICING AND WORKOVER RIG SERVICES To supply labour and equipment for the performance of Light, Medium, Heavy and Pole Rig Operations (see pg. 14)	HERITAGE PETROLEUM COMPANY LTD.	FEB 2022-PRESENT	ONGOING
PROVISION OF WELL SERVICING AND WORKOVER RIG SERVICES To supply labour and equipment for the execution of Swabbing Operations	HERITAGE PETROLEUM COMPANY LTD.	FEB 2022-PRESENT	ONGOING
OILFIELD MANAGEMENT & PRODUCTION SERVICES CONTRACT Management, operating and optimization of oil production in the South Erin	CEG SOUTH ERIN TRINIDAD LIMITED	FEB 2023-PRESENT	ONGOING

OUR OPERATIONS WITH HERITAGE PETROLEUM COMPANY LIMITED

a. Contract Name: a. Provision of Well Services and Workover Rig Services

SCOPE OF OUR SERVICES

We provide well-servicing and workover rig service for the execution of safe and efficient ‘well intervention’ operations on HPCL’s “low and off” wells, as well as instances when remedial work must be carried out due to surface control issues (e.g., wellhead repairs, blow-outs, etc.) and well-abandonment projects

We provide the supervision, labour, materials, transport, equipment, ancillaries, lifting, and all else necessary to perform the works:

1. Deliver quality, efficient, and cost-effective well-intervention, (e.g., well-servicing/ workover rig) services in areas specified in contract agreement by HPCL.
2. Operate and maintain rigs and auxiliary equipment in such a manner that will result in a zero accident/incident frequency and minimal downtime resulting from breakdown, etc.
3. Establish and maintain acceptable rig efficiencies that will ensure well-servicing/ workover jobs are completed within a tolerable margin of the budgeted cost and schedule (e.g., time).
4. Obtain statutory Ministry of Energy and Energy based Industries (MEEI) approval for workover/well-servicing rigs and maintain rig and auxiliary equipment in quality condition.

The well-intervention works performed include but is not limited to the following routine jobs:

- a. COPU’s/COPCPs - ‘clean-out’ wellbore/repair work on sucker rod pumping/PCP wells;
- b. COPL/COF – ‘clean-outs’ on plunger lift wells/flowing wells,
- c. RJ’s - ‘rod jobs’ (e.g., change of sucker rod ‘insert-type’ subsurface pump),
- d. CVPU/CVPCP/CVPL - conversions between the different modes of artificial lift, beam pumping, progressive cavity pump (PCP), and/or plunger lift.
- e. CVSI/CVWI – conversion to steam injection, conversion to water injection.
- f. COSI – ‘clean-out’ steam injection.
- g. Clean-out CO₂ injector, e.g., clean-out of carbon dioxide injector wells.
- h. ICPs/ RCPs – Initial completions/RCP recompletions.
- i. GPKs /FRAC packs – Gravel packs/FRAC packs.

j. Fish – Recover fish, including liner recovery.

k. Abandonments as required in accordance with the MEEI guidelines.

m. Services/jobs; e.g., ‘packer’ (pressure) test casing, well stimulation treatments, plug and abandonment, (e.g., P&A services), light ‘fishing’.

We perform the accurate acquisition, recording, and computation of downhole measurements, we execute the transportation of equipment, tools, and personnel to and between the well sites and we provide all QA/QC services required prior to the execution of works and conduct all certification, repair and maintenance services for equipment and personnel in accordance to local and international standards

b. Contract Name: Provision of Swabbing Services

1. We provide all supervision, manpower, tools, equipment, services, transportation, onsite storage facilities, materials, and other items necessary for well swabbing operations.



OUR OPERATIONS WITH RANGE RESOURCES TRINIDAD LIMITED

We entered into a contractor agreement with Range Resources Trinidad Limited in September 2021 for the operating of three onshore oilfields. We perform all works necessary to maintain and advance production, store, treat and transfer crude oil. within the fields, including, but not limited to:

- Drilling of Exploration and Development Wells as per the minimum work obligations (MWO), Conducting of EOR Study as per the MWO, Performance of workovers and heavy workovers, Swabbing, Well Servicing, Decommissioning of wells and Reactivation of wells.
- Geophysics and Geology- Integrated and complete seismic interpretation, in time or depth, maps, grids and contours. Integrated map and cross-sections. Math operations between horizon maps and grids. Advanced geological interpretation, geological cross-section with wells and composite logs. Production data, production tests and perforations. Assessing the potential of geologic trends and discovering where assets are underperforming
- Maintenance- Overseeing and executing the maintenance of the block, maintaining vegetation properly to all operation areas, location rebuilds, access roads maintenance, equipment repair and maintenance, power supply to old well site/s for recovering etc.
- Maintaining and repairing (if needed) the batteries at the gather stations of all three blocks.
- Producing and delivering the Crude Oil to designated receiving parties at the Delivery Point for receipt by HPCL.
- Complete HSSE and QA/QC management and supervision throughout the blocks.

5.0 Agriculture



Our Greenhouses Division (PGH & P) is a global company based in Israel and is recognized as one of the world's leading manufacturers and developers of complete greenhouse agricultural growing systems. The company has gained a "can do" tradition with an unmatched expertise in the development, manufacture, and installation of highly specialized controlled environment agriculture systems around the world. Our primary mission is to develop economically viable agricultural infrastructure projects that enhance the quantity and quality of agricultural production. In addition, the company provides on-location training, long-term follow-through, and market research and feasibility studies where necessary.

The company is a wholly owned private company with offices and manufacturing facilities in the USA and Israel it is one of the leading agricultural supply companies in the USA and Israel. We employ a staff of 122 people from Israel and East Africa and Eastern Europe with more than 23 locations of sales and serving centres. The company has a significant leading presence throughout agriculture markets in Israel, Mexico, Africa and in East Europe.

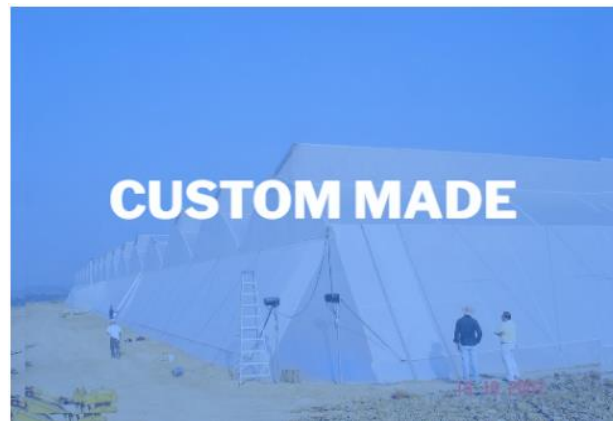
The company markets a wide and comprehensive variety of agricultural products including technical products and services, packaging supplies (cardboard and plastic), pesticides, irrigation equipment, agro-chemicals, fertilizers, seeds. We serve as a "one-stop-shop" for agricultural supplies, maintaining professional and customer-oriented service. The said link enables the

company to provide information and professional expertise as a complete package of services. A high-profile professional team of experts in the agricultural, financial and supply sectors manage the company. We are also unique by serving both the wholesale and retail markets.

GREENHOUSE MODELS

Our divisional mission is to develop economically viable agricultural infrastructure projects that enhance the quantity and quality of agricultural production.

We create models based on your climate and specifications:



FEATURES OF OUR MODELS:

- Greenhouse Structuring
- Galvanization
- Technical Expertise
- Trellising System
- Drive System
- Specialty Roof Covering
- Blower inflating system
- Harvest Equipment
- Coconut Growbag
- Hydroponic System/ Growing Substrate System
- Irrigation and Control System
- Drainage Disposal System
- Unique Growing Sensor
- Soil/Mulch Ground Cover
- Hot Water Heating System
- CO2
- Screening System- Single Layer
- Agrochemical Spraying System
- Circulating Fans
- Electrical System
- Sorting Machine and Cold Room
- Washing Machine
- Dryer
- External water heating system
- Automatic electronic sorter
- Scale and Carton Stands, Roller Conveyor



AREAS OF OPERATIONS

We strive to reliably deliver quality products based on partnerships and cooperation. We uphold the procedures and privacy policies of all parties involved with us with the utmost respect.

With base operations in Trinidad & Tobago, the following are areas we have served and continue to serve:





WHERE ARE WE IN 2023?

- We continue petroleum trading and supply operations and maritime logistics and shipping services
- We continue exploration, drilling, production and maintenance, operations in licensed petroleum fields and as contracted,
- We continue to expand production operations and endeavor into further growth opportunities with our business partners and clients.
- Our business opportunities and plans have involved the expansion our current rig and asset base, and as such we have engaged various strategic entities in conversation for the acquisition of such assets.



OUR PLANS FOR 2023-2024

The following are some of the planned achievements for the 2023-2024 period:

1. Expand Oil and Gas operations portfolio
2. Expand current O&G asset base
3. Expand and diversify our areas of operations.
4. Continuous development of our QHSSE Management System

We wish to continue to establish successful partnerships within the Caribbean and South American Region. We rigorously seek to expand our business opportunities, scope of work and asset base.



NABI-PGH OIFIELD EQUIPMENT OWNED AND OPERATED



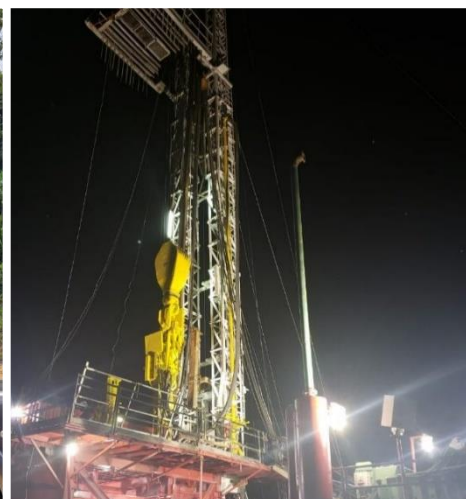
OILFIELD AND PRODUCTION EQUIPMENT

NABI-PGH maintains a fleet of vehicles, equipment and civil equipment that are utilized in the execution and support of operations. We continue to expand our equipment compendium based on our operational requirements.

a) Rigs: We operate a fleet of over ten (10) rigs that conduct operations in the categories of drilling light, medium, heavy, pole, coiled tubing and swabbing rig operation. Our current fleet is identified in the catalogue overleaf.

b) Tankers for oil transport: We operate a fleet of six (6) oil tankers with capacities ranging from 50-barrels to 80-barrels.

c) Trucks, Hiabs, Trailers, Pick-ups and Civil equipment (Backhoes, Tractors, Graders, etc.)- We maintains a fleet of this equipment for supporting of operations, the building of locations, building of roads and clearing access roads and well sites etc.



RIG #1

Description:

Drilling Rig
Failing Model 90 Stratmaster Rig
Lee C. Moore 87' Mast
Hook Load 200,000 lbs.



RIG #2

Description:

Workover Rig
Cooper 150
71ft Mast
Hook Load 120,000 lbs.



RIG #3

Description:

Pole Rig
Woodfield- Double
Pole
55 ft. Mast
Hook Load 60,000 lbs.



RIG #4

Description:

Swab Rig
23 ft Height
30,000 lbs.



RIG #5

Description:

Drilling Rig

Woodfield

71ft Mast

Hook Load 100,000 lbs.



RIG #6

Description:

Light Workover Rig
Woodfield/Ideco



RIG #7

Description:

Single Pole Rig
SK175
67ft Mast
Hook Load 68,500 lbs.



RIG #8

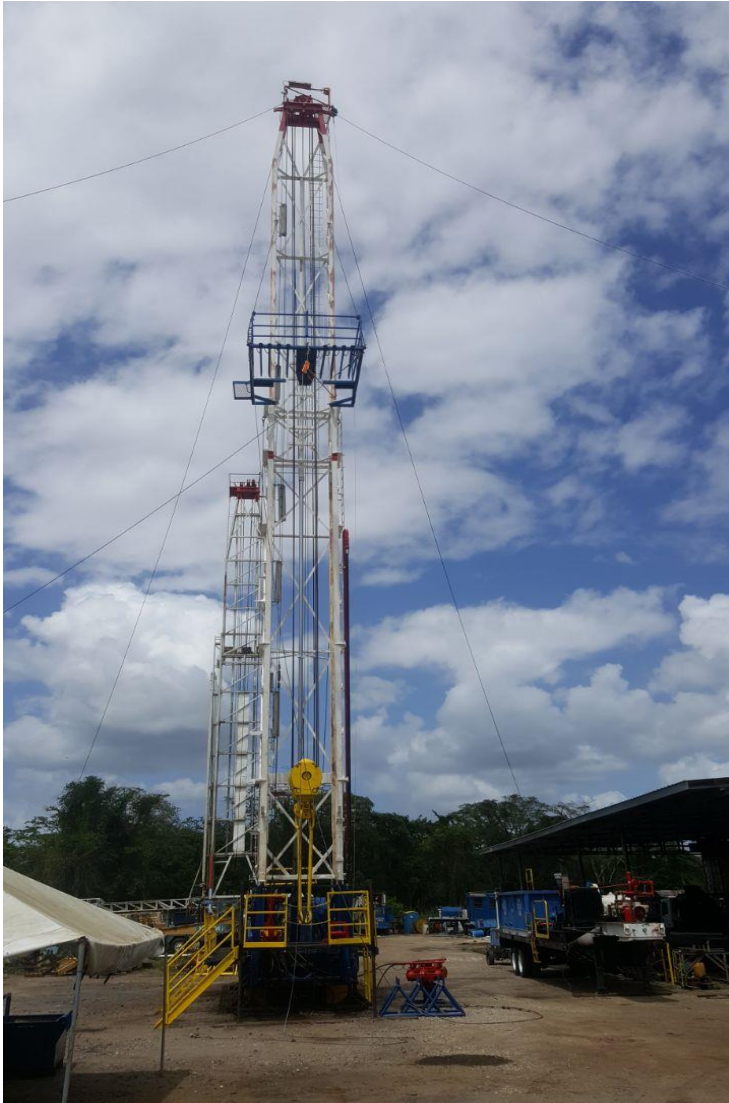
Description:

Heavy Workover

Cooper 350

96ft Mast

Hook Load 215,000 lbs.



RIG #9

Description:

Single Pole Rig

55ft Mast

Hook Load 44,000 lbs.



RIG #10

Drilling Rig



RIG #11

Description:

Swab Rig
Woodfield Gin pole
30 ft Height
18,000 lbs.



RIG #12

Description:

Swab Rig
Hydreq Pole
24.6 ft Height
22,000 lbs.



RIG #13

Description:
Swab Rig
Tiger General



RIG #14

Description:
Drilling Rig
Service King- 575



RIG #15

Description:

Drilling Rig
Crawler C-650-C





RIG T38- Mobile Drilling Unit capable of drilling to 8,000 ft md, with full compendium of equipment.

Make: LOADCRAFT 1000 HP Carrier Mounted Drilling Unit
 Model: 2004/ HRI -700
 Type: Mobile Drilling Rig Telescoping Double
 Maximum Depth Rating with 4-1/2" 16.6 ppf Drill pipe: 8,000 Feet
 Top Drive: Tesco Description: HMI 250 Rotary Drive: Type and Size, Speed Range (rpm):
 Hacker 22" 0-150 RPM
 Approximate number of loads to move rig: 20

Draw works:

Main Drum:
 Hydromatic Brake: 224 DR Cable Size: 1 1/8 Number of Clutches: 2
 Make & Model: Heartland Rig
 Engines: Make & Model: (2) 3406 - B Caterpillar (500 hp each)

Derrick:

Manufacturer: Heartland Height: 116 ft Weight Capacity: 410,000 lbs.
 Maximum Number of Lines: 10

Top Drive:

Manufacturer: Tesco Description: HMI 250 Capacity: 250 Ton 475hp Power Pack

Substructure:

Height and Capacity: 14' 6" Rotary Beam Cap. 408,000 lbs. Set Back Cap 225,000 lbs.
 Height above base of substructure to underside of rotary beams: 11'6"
 Windbreak on substructure: Ye

Traveling Blocks: Make & Model: TFI YG 180 Weight Capacity: 200-ton Number of Lines: 10

Elevators: Make & Model: 3 ½ & 4 ½ 175 Ton Bottleneck

Catwalk: Length & Height: 53' L x 40" Tall x 60" Wide
40"

Pipe Racks: Length & Height: 29' x 40"

Pumps: Make, Model, Input HP: _HRS F-1000 Qty. 2 (TWO) 1,000hp

Engine Make & Model: Caterpillar Model 3508 (MP1 equipped with Torque Converter) Liner Size and Stroke Length: 6 ½ x 10' stroke Max.

Continuous Operating Pressure: 3,000 lbs. Pump Speed (spm): 140

Steel Mud Pit I & II

Dimensions: (2) 5'TALL X 10'WIDE X 50'LONG Number of Compartments: 5 Capacity: 450 BBLs

Shale Shaker Make & Model: Two Derrick Model 48 Series - 3 Screen

Charge Pump Make & Model: 1 Charge Pump, 1 Mixing Pump, 1 Desander Pump All 5x6

BOP's: Make & Model: Townsend Type 80 Double Hydraulic Size: 11"

Pressure Rating: 3000

Rotating Head: Make & Model: Williams Rotating Head

Accumulator:

Make & Model: Burnsco -Bison

Capacity of Hydraulic Fluid: 250 gallons

Number of Stations: 5 Number of Pressure Bottles: 8

Hydraulic Pressure Source: Electric Motor Electric Motor: Yes

Gas/Diesel Engine: Air/Hydraulic Pump: Yes

Choke Manifold:

Valves: Make & Model: Barton 3" 3000 Pressure Rating & Size: 3" 3000

Chokes: Make & Model: 2" 3000 Type: Adj Pressure Rating & Size: 2" 3000

The drilling unit is supported with added equipment that can be upgraded to meet requirements, e.g., Choke Manifold and BOPs to 5000 psi or greater.

Light Plant:

Voltage, Amperage, Watts: 350 KW CAT.

Engine Make & Model: 3406 - B Caterpillar

Drilling Recorder:

Make & Model: _Pason EDR (electronic drilling recorder. Chart Type: 12 Hour _x_ 24 Hour

Iron Roughneck:

Make & Model: NATIONAL OILWELL VARCO ST-80C Iron Roughneck

Spin rollers @1750 ft.-lb. torque; Torque Wrench max make up torque @ 60,000 ft.-lb. and max break out torque @ 80,000 ft.-lb.

Pipe Wrangler:

Make & Model: Forum 9050-0006 Pipe Wrangler 14'5" Height with 4 GULL Wings

PUMP 1

Description:

2 x WILSON 600 Duplex Mud Pump, 7-1/4" x 14", Steel Fluid Ends w/ Quick Change Caps.



PUMP 2

Quantity: Description:

1 Emasco Pump

2 National Oil Well
Pumps



NABI-PGH
List of Assets as of July 2023

2023

Asset ID	Item Description	Make/Type	Condition Rating	Book Value \$	Book Value \$
			1-5	Value \$ (TTD)	Value \$ (USD)
R01	Failing 150 Stratmaster	Drilling	4	\$ 1,750,000.00	\$ 259,875.00
R02	Cooper 150-Rig 2	Light WO	4	\$ 3,000,000.00	\$ 445,500.00
R03	Woodfield-Rig 3	Pole WO	4	\$ 1,100,000.00	\$ 163,350.00
R04	Mack-Rig 4	Swab	5	\$ 350,000.00	\$ 51,975.00
R05	Woodfield-Rig 5	WO/Drilling	5	\$ 2,400,000.00	\$ 356,400.00
R06	Woodfield/Ideco-Rig 6	Light WO	4	\$ 1,300,000.00	\$ 193,050.00
R07	Service King-Rig 7	Pole WO	5	\$ 2,850,000.00	\$ 423,225.00
R08	Cooper 350-Rig 8	Heavy WO	4	\$ 2,000,000.00	\$ 297,000.00
R09	Mack-Rig 9	Pole WO	5	\$ 1,200,000.00	\$ 178,200.00
R10	Custom	Drilling	5	\$ 1,300,000.00	\$ 193,050.00
R11	Woodfield-Rig 11	Swab	4	\$ 250,000.00	\$ 37,125.00
R12	Hydreq-Rig 12	Swab	4	\$ 300,000.00	\$ 44,550.00
R13	Tiger General-Rig 13	Swab	4	\$ 250,000.00	\$ 37,125.00
R14	Service King-Rig 14	Drilling	5	\$ 3,500,000.00	\$ 519,750.00
R15	Reichdrill Inc. Crawler C-650-C	Drilling	5	\$ 1,800,000.00	\$ 267,300.00
XAA 4721	Cooper Model LTO 350 Rig	Heavy WO	4	\$ 700,000.00	\$ 103,950.00
TT01	Oil & Water Tanker Truck	International	5	\$ 350,000.00	\$ 51,975.00
TT02	Oil & Water Tanker Truck	International	5	\$ 300,000.00	\$ 44,550.00
TT03	Oil & Water Tanker Truck	International	5	\$ 400,000.00	\$ 59,400.00
TT04	Oil & Water Vaccum Tanker	Mack	5	\$ 400,000.00	\$ 59,400.00
TT05	Oil & Water Vaccum Tanker	Mitsubishi	5	\$ 200,000.00	\$ 29,700.00
TT06	Oil & Water Tanker Truck	Leyland	4	\$ 400,000.00	\$ 59,400.00
TAK 1673	Flatbed Truck w/ Boom Crane	International	4	\$ 200,000.00	\$ 29,700.00
TAA 894	Flatbed Truck w/ Boom Crane	Isuzu	4	\$ 200,000.00	\$ 29,700.00
TBW 2784	ERF Boom Crane	ERF	5	\$ 250,000.00	\$ 37,125.00
TCZ 791	Flatbed Truck	Isuzu	5	\$ 375,000.00	\$ 55,687.50
TBZ 1519	Hiab Truck	Isuzu	5	\$ 375,000.00	\$ 55,687.50
TCR 7618	ERF Truck	ERF	4	\$ 180,000.00	\$ 26,730.00
TCB 6543	ERF Truck	ERF	4	\$ 180,000.00	\$ 26,730.00
TBF 7596	ERF Truck	ERF	4	\$ 120,000.00	\$ 17,820.00
TBG 3262	Volvo Tractor Truck	Volvo	5	\$ 500,000.00	\$ 74,250.00
TAN 8573	RHP Tractor Truck	Nissan	5	\$ 500,000.00	\$ 74,250.00
TCM 8730	Mitsubishi Canter Truck	Mitsubishi	4	\$ 85,000.00	\$ 12,622.50
TBG 5212	Mitsubishi Canter Truck	Mitsubishi	4	\$ 80,000.00	\$ 11,880.00
TBX 9014	Mitsubishi Canter Truck	Mitsubishi	5	\$ 120,000.00	\$ 17,820.00
TBG 2452	Leyland Truck	Leyland	4	\$ 80,000.00	\$ 11,880.00
TAK 2810	Mitsubishi FUSO Truck	Mitsubishi	4	\$ 80,000.00	\$ 11,880.00
TAH 2668	Lowboy Trailer	Lowboy	4	\$ 350,000.00	\$ 51,975.00
TAE 7826	York Semi Trailer	York	4	\$ 120,000.00	\$ 17,820.00
CC 1-15	Doghhouse 1-15		4	\$ 750,000.00	\$ 111,375.00
-	Crew Vehicles		3-5	\$ 5,000,000.00	\$ 742,500.00
-	Misc. Oilfield Equipment & Tools (pumping jacks, storage tanks, pipes etc.)		4-5	\$ 140,000,000.00	\$ 20,790,000.00
				\$ 173,895,000.00	\$ 26,083,282.50

Rig packages consist of a full compendium of equipment, tools, HSE supplies and welfare facilities as per SOW.



PROFESSIONAL EXPERIENCE OF KEY PERSONNEL



COMPETENCE OF OUR PERSONNEL

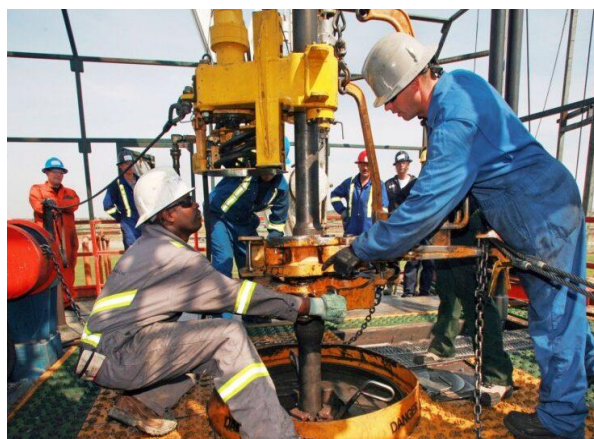
NABI-PGH consist of a group of professionals having vivid experience and wide exposure in Civil Engineering, Drilling & Production (oil, gas and water), Well Servicing, Project Engineering and Oil and Gas Management. Our team consists and is structured by specialists with profuse industry experience, qualifications and capabilities.

Our operations are managed and led by a team of field and operational technicians whom, in combination, carry many years of experience and are all qualified graduates and engineers from renowned universities across the globe, having worked or are working in reputable national and international companies both in Private and Multinational Corporations. Support staff are recruited on a basis of audit and requirement and are taken from a pool of competent, skilled and aptly trained personnel with pertinent years of experience.

The resource personnel working in the company have consistently provided reliable services and consultancy to a wide variety of corporate entities, either in the capacity of executive or as a business partner or consultant. Bottom line of our company philosophy is building long-term business and interpersonal relationships internally and externally where reliability, assured quality, target-oriented approach and professional acumen are the major building blocks.

We are a company where professionals from both technical and functional fields group together with an objective of providing appropriate business solutions. We realize the importance of functional knowledge and its impact in developing business solutions in the industry. We are constantly striving to become the leading provider of oil production operations, drilling, well completion, production, well construction, well servicing, and workover services, with profound business and functional knowledge and suitable expertise that fits the requirements of our business operations.

AREAS OF EXPERTISE



The main Strength of NABI-PGH lies in our blend of professionals, specialized and highly focused in operations. Increasing technical awareness is the strength where we hope to excel over current operators. Our strength lies in our ability to blend current management practices and Field Operations expertise, into cost-effective Leadership and Management Solutions, Products and Services. We understand the need for skill transfer to personnel.

The NABI-PGH Team will be equipped with the human resources specialized in different strategic and core areas in the Administrative, Operational and Technical functions of the Company. We hope to continuously hire and train personnel to meet required competency, certification and registration in the appropriate operational and technical areas.

Areas of Expertise:

1. Oil and Gas Exploration
2. Oil and Gas Production Technology
3. Petroleum Field Maintenance
4. Hydrological Experts
5. G & G Specialist Teams
6. Drilling Operation Experts
7. Production Experts
8. Reservoir Engineering Experts
9. IT and System Analysis, Data Acquisition and Analysis
10. Transmission and Storage
11. Marine Logistics
12. Instrumentation and Automation
13. Facility Maintenance
14. Health, Safety and Security
15. Environmental Management
16. Asset Management
17. Quality Assurance, Certified Equipment Inspectors
18. Construction and Civil Engineering.



Name: **Rafael Shir Nabi**

D.O.B: 30th October 1981

Education:

Electrical Engineering, Florida International University.

**Director-
Rafael Shir Nabi**

Rafael specializes in civil and building construction on a commercial scale. His portfolio encompasses commercial waste and potable pipe line supply and installation as well as design and build projects in the areas of waste and potable water treatment. He has managed onshore drilling rigs in Guyana and Trinidad & Tobago.

Rafael attended Primary and Secondary schools in Guyana and furthered his education in Florida, USA. In Florida, Rafael worked on several successful land acquisition and development projects from Commercial buildings to Agriculture. He also worked with several unique construction companies where he learned to administer and identify quality artisans for the desired end result.

Rafael has worked with a wide range of clients including international sporting bodies, Regional and International Architectural and Consulting Firms, Local and Regional Ministries of Government, Large Local and Regional Businesses.

Rafael currently sits on the boards of several companies which are responsible for property acquisition and development, pharmaceutical and consumer products distribution and sports administration (football).



Name: **Philmon Morren**

D.O.B: 13th September 1974

Education

Randy Smith Drilling and Well Control School.

Electrical Engineering

IADC Well Control Certified

Director
Philmon Morren

Mr. Philmon Morren is a specialist in the management of petroleum operations with an advent for drilling (oil, gas and water), production, well servicing, construction and maintenance operations. With his wide scope and portfolio Mr. Philmon Morren sought to grow the company equipment capacity to providing a complete drilling and production line of rigs and equipment and developed the Company into becoming a one stop Integrated Contractor and Service Provide for Petroleum Operations.

With over 26 years local & international experience, Philmon has a lifetime career spent in oil, gas and water well drilling, work overs and completions. He worked in oil and gas fields on-shore and off shore and maintenance operations that developed his senior supervisory and foreman skills with international oil companies in North America and the Latin American & the Caribbean Region. Additionally, he functioned as a project director, responsible for logistics transport and equipment maintenance on major projects in Georgetown Guyana.

DRILLING & WORKOVER OPERATIONS SPECIALIST

Drilling

Well Types: Oil, Gas & Water

Directional Drilling

Horizontal and Vertical Wells > 8000 ft

Rig Type: Rotary & Air

Heavy Workovers

Fishing | Milling | Re-perforating | Casing Recovery |
Gravel Pack Operations | Liner Installation | Well
Abandonment Operations

Production Operations

Well Completion | Coil Tubing Operations | Wireline Operations | RPP
(Retrievable Production Packer) Setting & Retrieving



President Frederic Elusma

Mr. Fred Elusma has extensive knowledge and experience in law, logistics, financing, petroleum operations management, process optimization, client relations and human resources.

He possesses 15 years + experience in the petroleum industry and specializes in the setting and decision making of present and future policies, finalizing decisions for all matters on strategic import/export, affiliations, agreements, partnerships, governments, governmental agencies, institutions, organizations, and enterprises nationally and internationally.

Fred is systematic and detail-oriented with a broad and deep experience in business; teamwork, leadership; working efficiently and prolifically with others and achieving objectives through collective efforts.

He has developed the understanding to face challenges and evaluate opportunities that is within the scope of said challenges, initiate the necessary steps to analyze potential risks and derive alternative options to manage and negate any foreseeable risks.

Fred is a dynamic leader and team builder with exceptional interpersonal and communication skills, speaking several languages. His advanced leadership skills has had success in managing groups to achieve goals, and connect organizational objectives with organizational capabilities

Fred's philosophy is to encourage collaboration and inspire individuals, and he has such worked with several worldwide institutions such as; UNITED NATIONS, UNICEF, MEDECINS SANS FRONTIERS, and other Governmental authorities within the region, for the promoting and enhancing of human cores values.

Adjusting with diverse views and aspects in different cultures and organizations has established the type of leadership and skills and business adept that support his aforementioned qualifications.

Name: **Frederic Elusma**

- Attorney Juris Doctorate in Law
- Bachelor of Science in Law
- Certified Chiropractic Assistant
- Motivational Speaker
- Minister of Energy State of the African Diaspora (SOAD)
- Former Member of American Immigration Lawyers Association (ALIA).
- Business Entrepreneur
- International Business Consultant
- Founder, President & CEO, West Indies Express Airlines
- Founder, President & CEO,
- Founder & CEO, Port Of The New World "The Gateway Of America"
- Founder & CEO, Grave Max
- Vice President Americo Investment, LLC.

KEY PERSONNEL

The key personnel hereunder possess the necessary expertise required for the proficient functionality of NABI-PGH operating teams.

TEAM LEADS	
Name	Position
Mr. Horace Tuitt	Wellsite Geologist
Mr. Ramsingh Bickraj	Production Engineer
Mr. Myodeen Ali	Production Field Manager & EOR Technician
Mr. Deoraj Beephan	Technical Operations Lead
Mr. Shiraz Rajab	Technical Consultant
Mr. Anthony Syms	Drilling Specialist
Mr. Marlon Marcelle	Operations Manager
Ms. Samantha Cato	HSSE Consultant
Mrs. Lisa Ramdeo	HSE Officer
Mrs. Tami Lessey-Price	Contracts Administrator
Mr. Sean Muradali	Procurement Manager
Ms. Shania Lugo	Administrative Manager
Ms. Trisha Shah	Accounts & Finance Lead
Mr. Nigel Clement	Head of Security & Business Development Manager

- Our geological team is led by Mr. Horace Tuitt whom is proficiently acquainted in the petroleum geology in the South American region with over 40 years' experience as a Wellsite Geologist.
- The technical and production teams are led by Mr. Deoraj Beephan,, Mr. Shiraz Rajab, Mr. Ramsingh Bickraj and Mr. Myodeen Ali.
 - Mr. Bickraj is a senior production engineer with over 48 years' experience in the petroleum industry with expertise in drilling, well designs, time/cost /risks analyses, equipment/materials /logistics, day to day well optimization, testing, completion, rig selection, execution and post analysis.
 - Mr. Rajab is a technical petroleum consultant with over 48 years' experience in the energy sector having extensive experience in drilling, petroleum engineering, geology, reservoir engineering, production and testing operations
 - Mr. Deoraj Beephan is technically versed in drilling and production operations with over twenty-five years' experience in the oil and gas/energy industry.

- Mr. Myodeen Ali has over 30-years' experience in petroleum operations. We specializes in project planning and execution.

The company's technical team is made up of local and foreign consultants with expertise in the following areas

1. 2D and 3D seismic data processing onshore and offshore; drilling and testing programmes, both onshore and offshore; and geological and reservoir simulation desk top studies including EOR CO2 projects

2. Reservoir modeling and prospect generating through geological modeling both local and abroad

3. Development of mature assets through emerging drilling and completion technologies as well as the identification and exploitation of undeveloped horizons within mature fields.

4. Experience and proven track record in production operations local and abroad in small and large oil and gas fields

- The drilling team lead is Mr. Anthony Syms who possesses over 40 years' experience in the energy industry.
- Rig Operations are managed by the Rig Operations Manager Mr. Marlon Marcelle whose experience spans over 11 years in petroleum operations.
- Health, Safety, Security and Environmental Management is led by Ms. Samantha Cato and Mrs. Lisa Ramdeo whom both possess over 10 years' experience in Oil and Gas specific HSSE management.
- Supply Chain Management (SCM) and Administration team are led by procurement manager Mr. Sean Muradali who has over 15 years' specific experience in energy procurement, Mrs. Tami Price whom possesses 18 years' specific experience in contracts administration and Ms. Shania Lugo who has 5 years' experience in O&G specific administration.
- Our finance & accounting team is led by Ms. Trisha Shah who has over twenty years' experience in the field.
- Mr. Nigel Clement is the company's Head of Security with over 20 years' specific experience.

All areas of operations are overseen by, Mr. Philmon Morren and Mr. Frederic Elusma.

The team will be supported by a number of consultants with tremendous experience and project specific knowledge to guide efficient and valuable operatio



CORPORATE PHILOSOPHY

Corporate Social Philosophy

NABI-PGH have undertaken and supported several educational projects with the simple philosophy of contributing to the sustainable development within the areas of our operations that is exceptional and durable for future generations. Our philosophy is based on the proverb ‘Teach a man to fish; and you’ve fed him for a lifetime’. The essence of what we focus upon, where we can strive to deliver to communities, education and social support.

Corporate Environmental Philosophy

Environmental responsibility is integrated into all areas of our operations. We are committed to providing quality services in a manner that ensures the safety, health and sustainability of the areas in which we operate. We strive to:

- Be an environmentally responsible neighbor in the communities where we operate
- Comply with all legal requirement, regulation and standards in our region of operation
- Integrate environmental awareness and impact into all decision making and operational activities
- Promote green initiatives
- Promote environmental responsibility among all stakeholders
- Continually improve our environmental performance

For any inquiries, please feel free to email us at nabipgh@gmail.com

Sincerely,

The NABI-PGH Team



249-251 Grants Road,
Rousillac,
Trinidad and Toabgo, W.I

End